



RISE ABOVE RISK.

**REALIZE**

POSSIBILITIES.

LOW-LEVEL  
ACCESS LIFTS



# A FRESH PERSPECTIVE FOR YOUR TEAM AND YOUR BOTTOM LINE

It's time to look at the job differently. It's time to rethink how work at height gets done. You need new ways to reduce risks for your workers and your bottom line. Your team needs smarter, safer ways to get work done. The fact is, ladders and scaffolding simply cannot measure up to modern-day safety and productivity standards.

With innovative low-level access lifts from the industry leader JLG, you're equipped to get more work done at height, safely and easily. Our enhanced and expanded family of low-level access equipment applies the same uncompromising benchmarks for safety, productivity and operator comfort to indoor applications at lower heights.

Featuring game-changing maneuverability and a hands-free, 360-degree range of motion at working heights of up to 17-ft—all from lightweight machines that offer virtually no setup time—low-level access solutions are the smarter alternative to ladders and scaffolding built to keep you safe wherever duty calls.



## LOW-LEVEL ACCESS MACHINES ARE IDEAL SOLUTIONS FOR:

- ⬡ Mechanical & Electrical
- ⬡ HVAC & Ductwork
- ⬡ Drywall
- ⬡ Construction Finishing Work
- ⬡ Facilities Maintenance
- ⬡ Painting
- ⬡ Retail Refit & Display
- ⬡ Cleaning
- ⬡ Data Centers
- ⬡ Healthcare Facilities





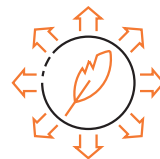
## ELEVATE SAFETY

Enclosed platforms that can **carry up to 550-lbs and reach working heights up to 17-ft**, low-level access from JLG sets a new bar for safety that ladders and scaffolding will never reach.



## ELEVATE PRODUCTIVITY

Work comfortably with both hands and a **360-degree range of motion while reducing fatigue** and eliminating the hassle of carrying tools and supplies up and down ladders and scaffolding.



## ELEVATE VERSATILITY

**Low-level access lifts are lighter weight and have a smaller footprint**, making them easier to maneuver around all areas of a job site or facility —no matter which model you choose.



**500K+** PEOPLE ARE  
TREATED FOR  
**LADDER-RELATED  
INJURIES**  
IN THE U.S. EVERY YEAR

## ARE LADDERS WORTH IT?

Every time a ladder is used on your job site, you risk racking up thousands of dollars in injury compensation costs—not only due to falls from a surprisingly low distance of 7.5-ft (on average), but from ergonomic and overexertion injuries as well.

According to the Consumer Product Safety Commission, more than 500,000 people are treated for ladder-related injuries in the U.S. annually, with the Bureau of Labor Statistics reporting that over 200,000 of those injuries are in the construction sector alone. A separate study found that falls from height cost businesses approximately \$132,377 per injury in direct compensation. And when your workers are injured from overexerting their backs or from a fall, the study found that they're away for an average of 14-22 days—which means that meeting your deadline may be thrown out the window.

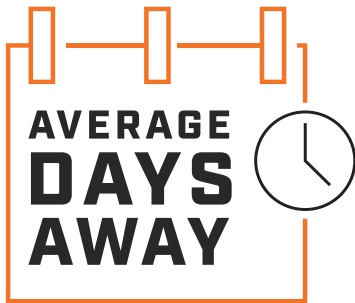
Even more unfortunate is that 36% of construction fatalities are a result of falls, many of which are from less than a 20-ft working height. In fact, falls from height are the leading cause of death in construction, according to OSHA data. The National Safety Council estimates that a fatal injury at work can cost your business approximately \$1.34 million per fatality.

### SOURCES:

Peter Simeonov, PhD, and Sydney Webb, PhD (March 13, 2017), "It's National Ladder Safety Month," National Institute for Occupational Safety & Health, <https://blogs.cdc.gov/niosh-science-blog/2017/03/13/ladder-safety-month/>; "Falls – Lower Level," NSC Injury Facts, <https://injuryfacts.nsc.org/work/safety-topics/falls-lower-level/>; "Top Work-Related Injury Causes," NSC Injury Facts, <https://injuryfacts.nsc.org/work/work-overview/top-work-related-injury-causes/>; "Construction Statistics," The National Institute for Occupational Safety & Health, <https://www.cdc.gov/niosh/construction/statistics.html>; "Work Injury Costs," NSC Injury Facts, <https://injuryfacts.nsc.org/work/costs/work-injury-costs/>; Karoly Ban Matei (January 18, 2024). "At What Height Do Falls Become Deadly?" Safeopedia, <https://www.safeopedia.com/at-what-height-do-falls-become-deadly/77503>.

FALLS FROM HEIGHT COST  
BUSINESSES APPROXIMATELY

**\$132,377**  
PER INJURY



AVERAGE  
**DAYS  
AWAY**

**14 DAYS**

DUE TO  
OVEREXERTION

**22 DAYS**

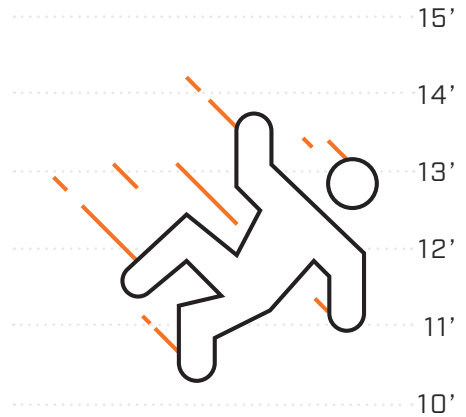
DUE TO INJURY  
FROM FALL

**31%** OF FALL-  
RELATED  
FATALITIES OCCUR AT  
**15 FEET**  
OR LOWER

A FATAL INJURY  
AT WORK COSTS  
BUSINESSES

~ **\$1.34**  
**MILLION**

PER FATALITY



**36%**

OF CONSTRUCTION  
**FATALITIES**  
RESULT FROM FALLS.

ONCE YOU START  
ADDING IT UP,  
YOU NEED TO ASK  
YOURSELF:

**ARE  
LADDERS  
WORTH  
THE RISK?**

# NON-POWERED ECOLIFT SERIES

## MORE PRODUCTIVITY IN MORE PLACES

Whether your work calls for HVAC ductwork, electrical installation or work on delicate floors, the improved EcoLift™ Series helps you answer the call with confidence to spare. Featuring power-free operation—no oil, batteries or hydraulics—for non-disruptive, eco-friendly work at heights up to 13-ft, with 330-lb capacity and a game-changing stored power lift/lower system, these lightweight lifts are built to accomplish more, anywhere, anytime.



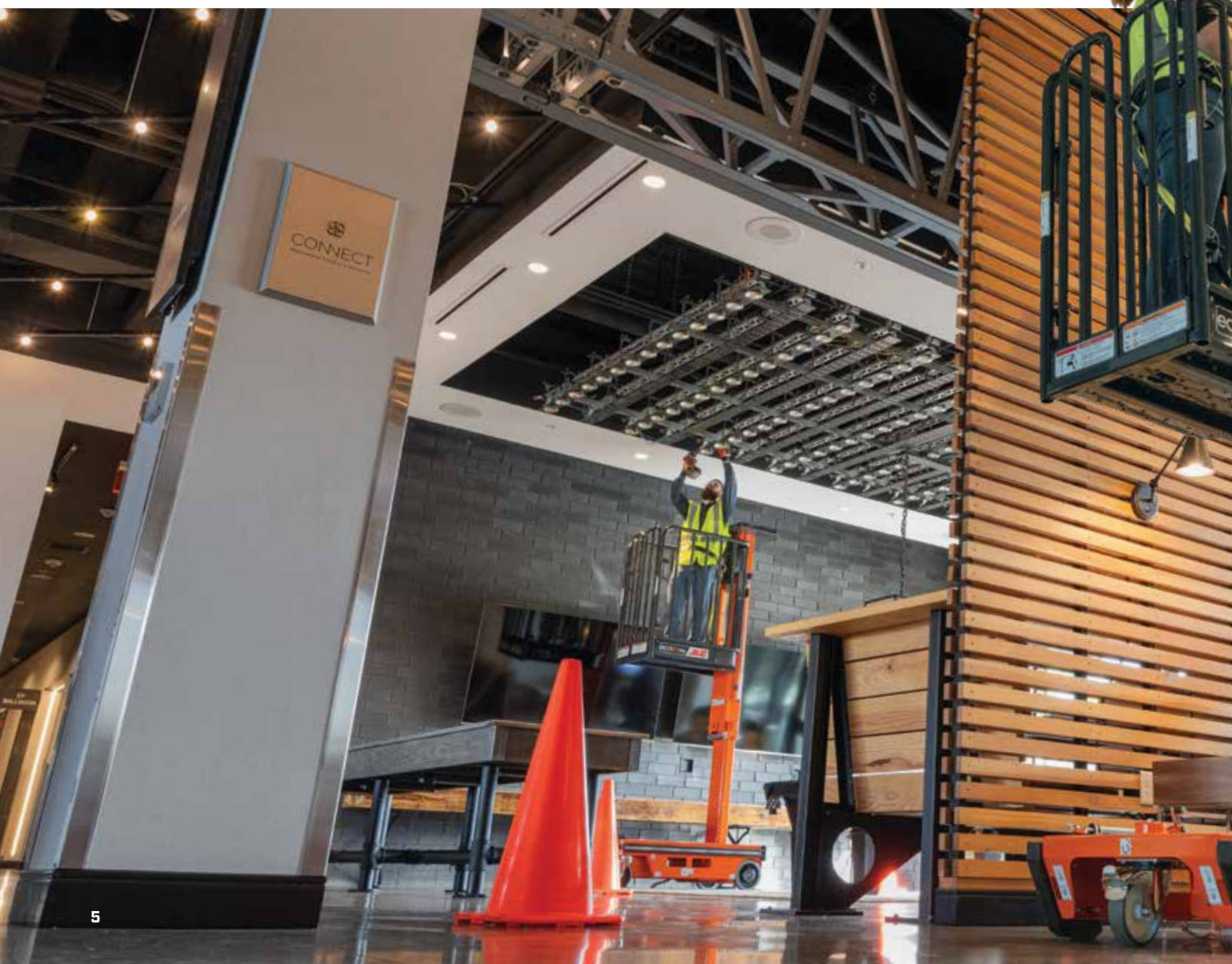
### AT YOUR SERVICE

With no hydraulics or batteries, the EcoLift requires less routine maintenance than other machines, delivering more uptime and reducing overall total cost of ownership.



### GET A MOVE ON

Lightweight, with a narrow 28-in width that fits through single doorways, the EcoLift can be maneuvered effortlessly by anyone, wherever work needs to get done.







### POWER-FREE OPERATION

The EcoLift's patented, stored power lift/lower system lets you elevate with just the turn of a crank, offering 24/7 use that's virtually maintenance-free.



### CHOICE OF TWO MODELS

From the EcoLift 50's working height of 11-ft to the EcoLift 70's working height of 13-ft, either lift will help you handle your work with ease.



### THE STRONG, SILENT TYPE

Sturdy, ergonomic steel platform and automatic locking wheels let you work confidently with both hands.



### STANDARD FEATURES

- No batteries or hydraulic oil, for clean, quiet operation
- Auto-lock brake on elevation
- Tool tray
- Forklift pockets
- Saloon-style doors
- Protective wall bumpers
- Non-marking wheels

### ENHANCED FEATURES

- Vertical rail updates for enhanced safety
- Improved casters for easier locking, unlocking and maneuverability (EcoLift 70)
- Upgraded steel platform with better grip, access and durability

### OPTIONAL ACCESSORIES

- Maintenance tray with anchor points to tether tools
- Steel tray (optional for EcoLift 50, standard on EcoLift 70)

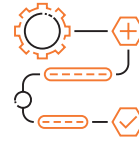
## ACCESS WITHOUT THE WEIGHT

When scaffolding and ladders slow you down, get to work with a more productive solution. The upgraded 830P Push-Around Lift combines the height you need, the reach you want and a platform capacity of up to 440-lbs. It delivers heavy-duty durability that's tough enough to tackle any challenge yet lightweight enough for use on sensitive floors and elevators. Simply push into place and get to work.



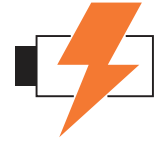
### READY. SET. WORK.

No setup time required. Once in position, simply lock the caster wheels, press a button to elevate and get more done.



### STREAMLINED SERVICE

Innovative flip-up and self-supporting platform, combined with neatly packaged components, allows for no-fuss service access.



### POWER LIFTER

Powered by a maintenance-free, 12V AGM battery for lower cost of ownership and increased life cycle to handle heavy-duty applications.



### STANDARD FEATURES

- Auto-lock wheels on elevation
- Non-marking caster wheels
- Protective wall bumpers
- Tool tray
- Frame-mounted bubble level
- Integrated fork pockets



### ENHANCED FEATURES

- Vertical rail updates for enhanced safety
- Improved casters for easier locking, unlocking and maneuverability
- Upgraded steel platform with better grip, access and durability



### OPTIONAL ACCESSORIES

- Maintenance tray with anchor points to tether tools





## A FULL DAY'S WORK WITH A SINGLE LIFT

Rise to a new level of job site efficiency with the improved 1030P Push-Around Lift. The large, enclosed steel platform safely holds up to 550-lbs, allowing you to keep more tools and materials at height and eliminating repeated trips up and down ladders or scaffolding. Plus, its light weight and low ground bearing pressure make this lift the ideal solution for heavy-duty tasks on sensitive floors with load requirements.



### GET MORE DONE

The 1030P features a sizable 29.5-in x 60-in platform that carries up to 550-lbs, allowing you to complete any number of tasks as high as 16-ft without repositioning.



### TRIPLE THREAT

It has power. It has workspace. And measuring at just 31-in wide, it has the maneuverability to pass through single doorways with ease.



### SAFETY ON AUTOPILOT

The enclosed platform with self-closing gate and auto-locking wheels provides unmatched security and confidence, allowing the operator to keep their focus where it belongs.



### STANDARD FEATURES

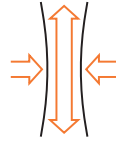
- Auto-locking wheels on elevation
- Load sensing system
- Non-marking wheels
- Frame-mounted bubble level
- Integrated fork pockets
- Self-closing platform gate
- Heavy-duty lifting cantilever design

### ENHANCED FEATURES

- Improved casters for easier locking, unlocking and maneuverability
- Upgraded steel platform with better grip, access and durability

## TAKE PRODUCTIVITY TO NEW HEIGHTS

Give your team, and your business, a fresh perspective with the latest JLG® low-level access lift, which features our tallest working height yet at 17-ft and 4-in. With 360-degree, hands-free access to work, a robust elevating work platform to take all your tools to height, and a secure system to minimize risks to worker safety and your bottom line, the 1230P will help you rethink limits and meet your business goals.



### TALL AND SLENDER

Compact dimensions for a minimal footprint on the floor and an extended working height over 17-ft for maximum reach on the job—the 1230P features a 28-in x 33.5-in platform to fit almost any operation.



### MANEUVERABILITY LOCKED-IN

Easy-lock caster wheels with improved swivel make repositioning the machine fast and simple, with no setup time required. Once you're locked in, you're ready to elevate at the push of a button.



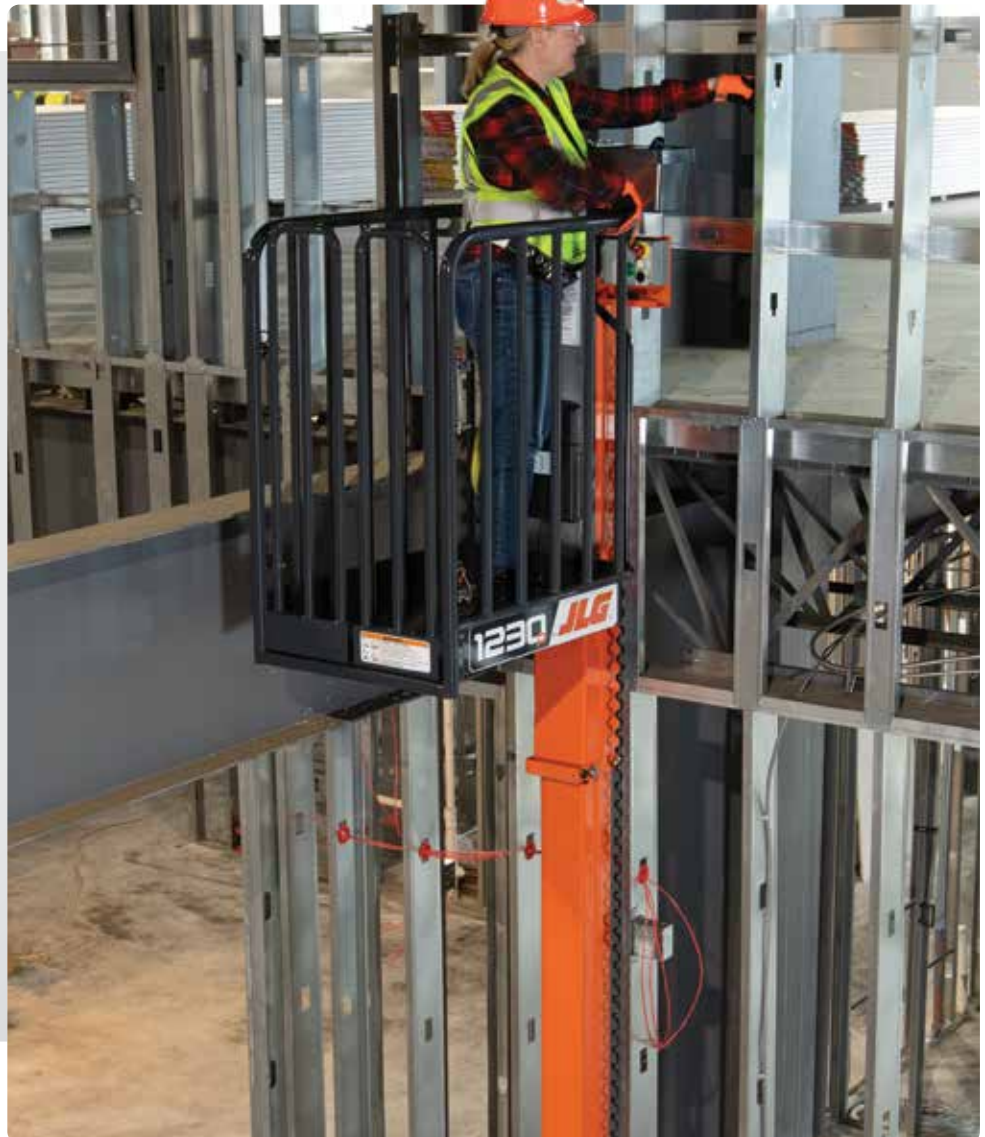
### ALL-ROUND SAFETY AT HEIGHT

A steel platform with ergonomic access and a steel step for better grip also features vertical rails around the platform to provide enhanced protection for the operator.



### STANDARD FEATURES

- Auto-lock wheels on elevation
- Non-marking caster wheels
- Protective wall bumpers
- Tool tray
- Frame-mounted bubble level
- Integrated fork pockets
- Vertical rail for enhanced safety
- Easy-lock casters for easy positioning
- Heavy-duty steel platform with enhanced grip, access and durability



# SPECIFICATIONS



ECOLIFT 50

ECOLIFT 70

830P

1030P

1230P



**WORKING HEIGHT**

11-ft / 3.5-m

13-ft / 3.96-m

14-ft 2-in / 4.32-m

16-ft 2-in / 4.9-m

17-ft 4-in / 5.5-m



**PLATFORM HEIGHT**

5-ft / 1.5-m

7-ft / 2.2-m

8-ft 2-in / 2.5-m

10-ft 2-in / 3.1-m

11-ft 4-in / 3.5-m



**OVERALL HEIGHT**

61-in / 1.55-m

76-in / 1.94-m

5-ft 1-in / 1.56-m

6-ft 1-in / 1.85-m

6-ft 5-in / 1.95-m



**MACHINE WIDTH**

28-in / 0.7-m

29-in / 0.74-m

29.5-in / 0.75-m

31-in / 0.79-m

30-in / 0.76-m



**MACHINE LENGTH**

39-in / 0.99-m

50.3-in / 1.28-m

47-in / 1.19-m

64-in / 1.63-m

47-in / 1.2-m



**PLATFORM SIZE**

27.5 x 24-in / 0.72 x 0.6-m

33 x 25.5-in / 0.85 x 0.65-m

33.5 x 28-in / 0.85 x 0.72-m

29.5 x 60-in / 0.75 x 1.52-m

28 x 33.5-in / 0.72 x 0.85-m



**CAPACITY**

330-lb / 150-kg

330-lb / 150-kg

440-lb / 200-kg

550-lb / 249-kg

440-lb / 200-kg



**WEIGHT**

432-lb / 196-kg

703-lb / 319-kg

714-lb / 324-kg

805-lb / 365-kg

952-lb / 432-kg



**MAX GROUND BEARING PRESSURE**

168 psi

175 psi

463 psi

174 psi

489 psi



**POWER SOURCE**

n/a

n/a

Battery 12V AGM

Battery 12V AGM

Battery 12V AGM



We provide coverage for one (1) full year, and cover all specified major structural components for five (5) years. Due to continuous product improvements, we reserve the right to make specification and/or equipment changes without prior notification. This machine meets or exceeds applicable ANSI and CSA requirements based on machine configuration as originally manufactured for intended applications. Please reference the serial number plate on the machine for additional information.



RETHINK HOW WORK GETS DONE.

**JLG<sup>®</sup> LOW-LEVEL  
ACCESS LIFTS ARE  
A BETTER CHOICE  
FROM ANY ANGLE.**



JLG.com